

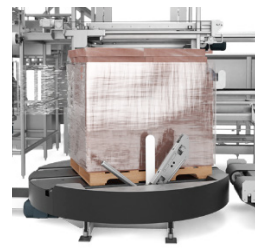
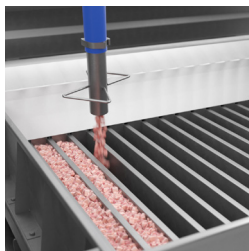
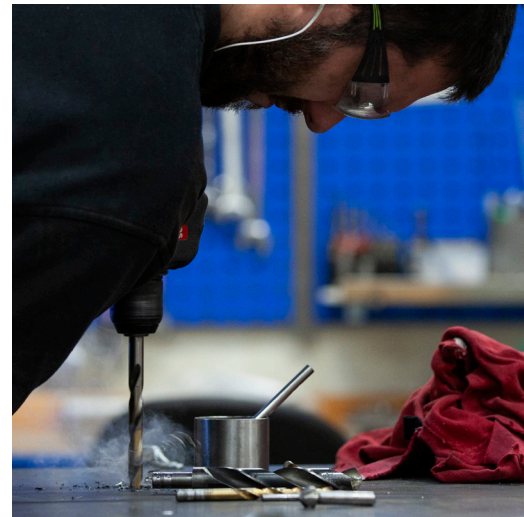
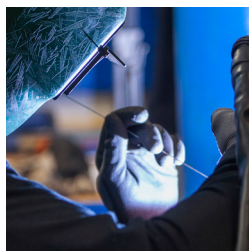
Description

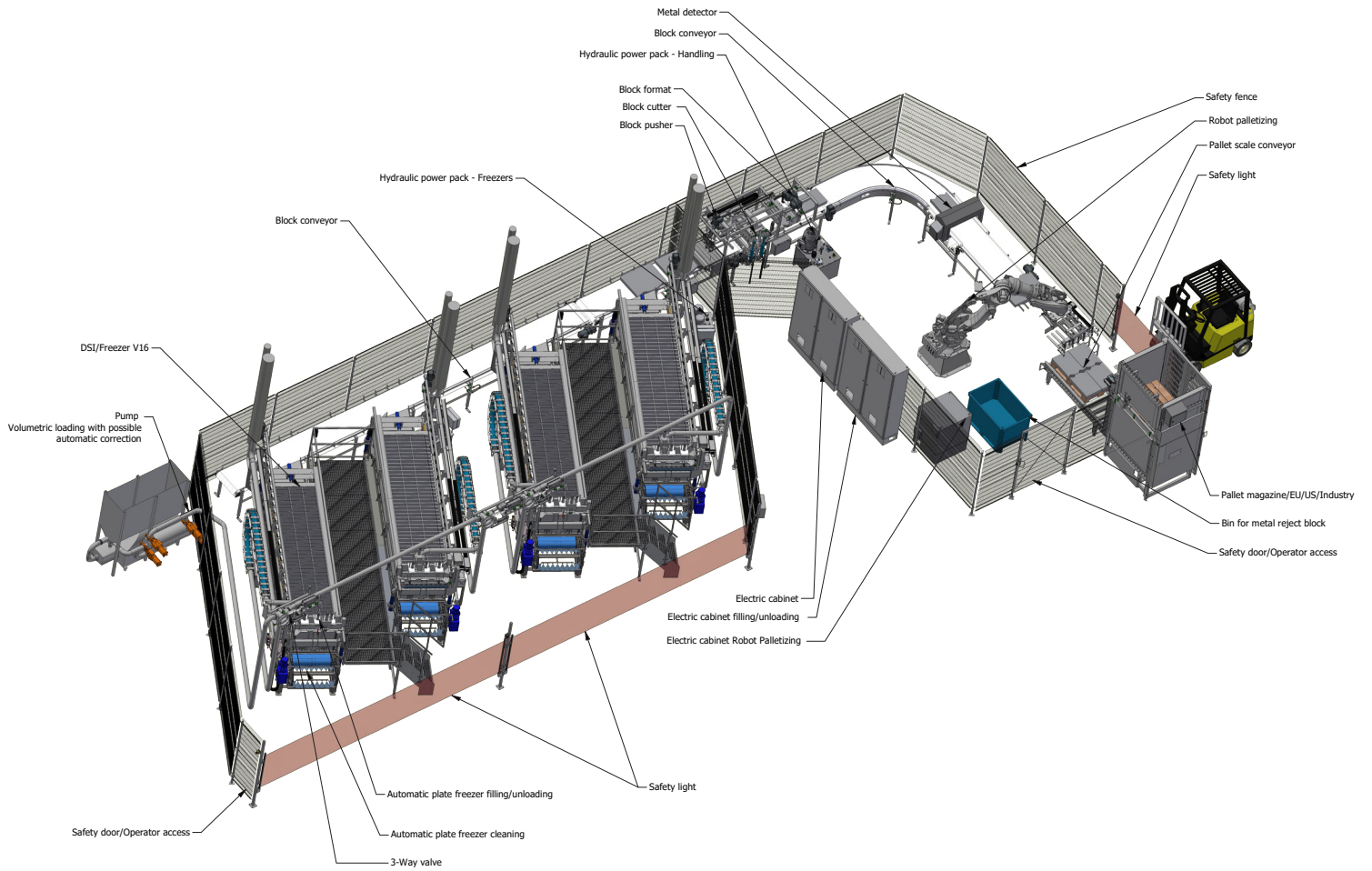
Drawing nr. 122-656856

Full-Automatic production

Pumpable products

Cases based on 4 freezers





Full- automatic production

Pumpable products

Fully automatic lights-out production based on automatic V16 freezers with automatic filling, discharge, and cleaning.

Fully automatic robot palletizing, capable of packing full and half blocks thanks to the incorporated block-cutter.

Cases based on 4 Freezers

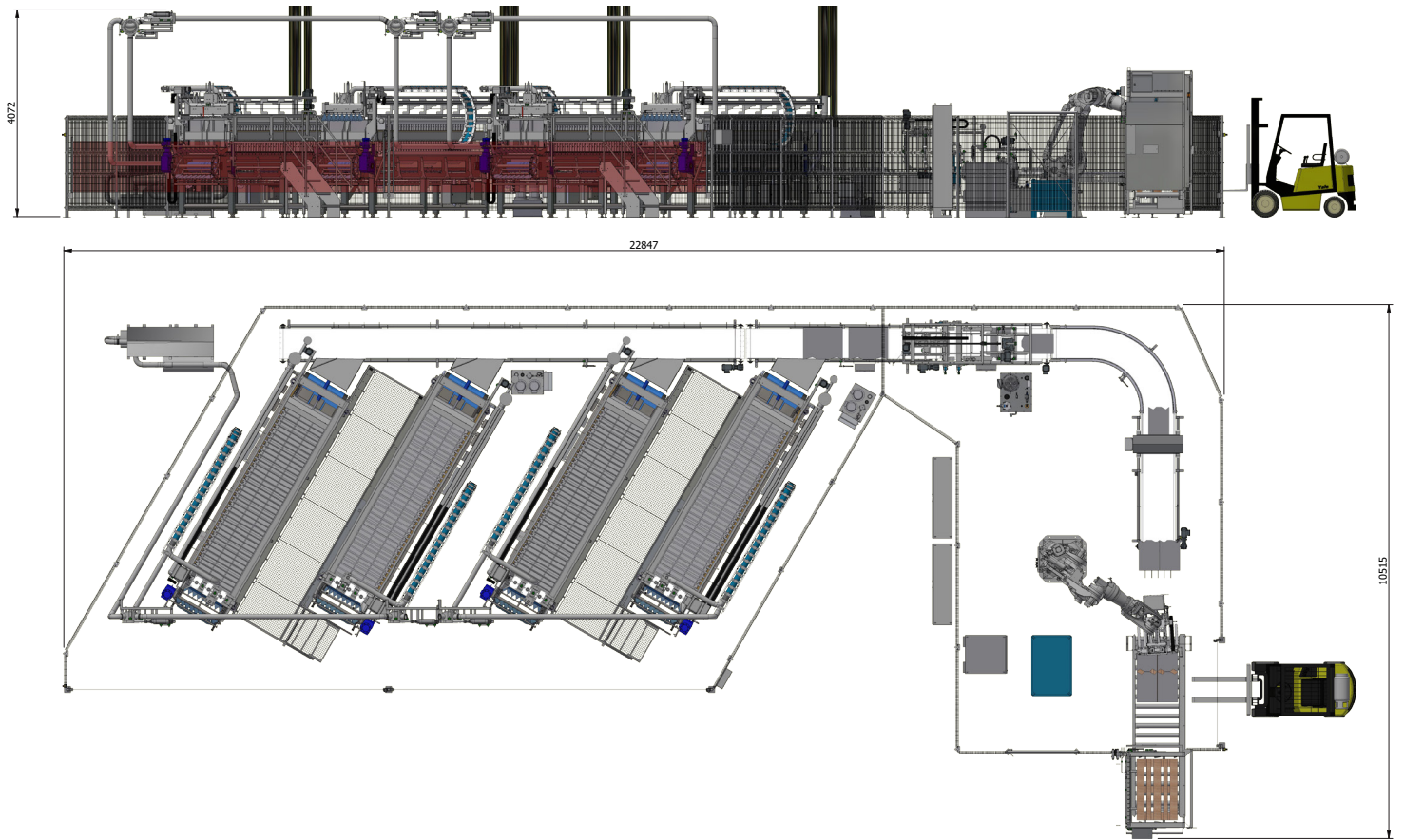
- ▶ V16 36/75 Nh3 -38° C
- Cycle time 180 min
- Approx 32,5 Ton/24 hours
- Block size 2x 600x400x75 mm

MDM

LIQUIDS /SLURRY

Drawing nr. 122-656856





Flow Description

Pumpable products

*The process and description of the flow of the project.
Depending on the product the freezers XXXX*

The operator must load the hopper with product before starting the pumping process.

The pump is connected to a pipe system which automatically can load a plate freezer with product, the system will always send same batch size to each freezer pocket. Once the freezer has been loaded the freezing process starts.

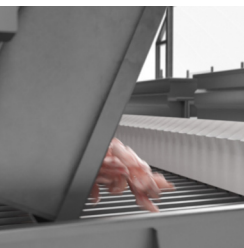
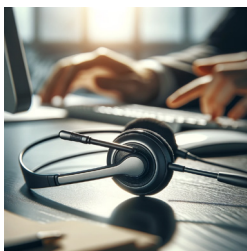
When the blocks are solid frozen, the freezers will open

automatically, a light will turn on and start the automatic unloading process. Due to the block's sizes, we assume some of the blocks will still stick to the plates. If this is the case, the system automatically starts the block release system containing three pneumatic cylinder which simultaneously will loosen the blocks. It is not possible for the push function to damage the freezer, but the system will make sure the cylinder is positioned correctly over the slots. When the system has controlled the freezer, the freezer will close again at be ready for a refill.

The frozen blocks will be transported on a conveyor system through a metal detector. If metal is detected the palletizing robot will remove the detected block from the system for a manual inspection. The robot places the frozen blocks on a pallet. The system will be able to place a sheet of plastic between the

layers. This feature can be enabled or disabled on the HMI. When a pallet is full it must be picked up by a forklift.

Erlinord Automation can provide Scale stations, labelling units, stretch wrappers, stretch hood machines. Feel free to send an inquiry for further dialogue.



Worldwide **Service & support**

Get in touch with the people behind Erlinord.
We're here to help you find the right solutions.

www.erlinord.com



Thomas Uldall Jørgensen
CEO/ Part owner
+45 20718820
tuj@erlinord.com



Lasse K. Jensen
Spare parts & service manager
+45 2262 5143
aftersales@erlinord.com

