

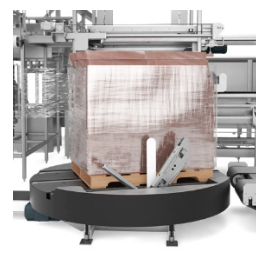
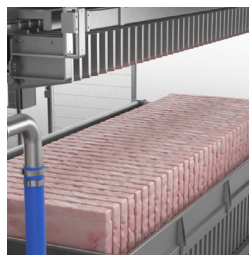
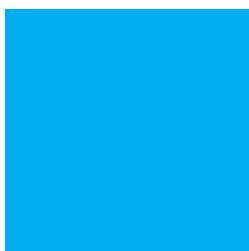
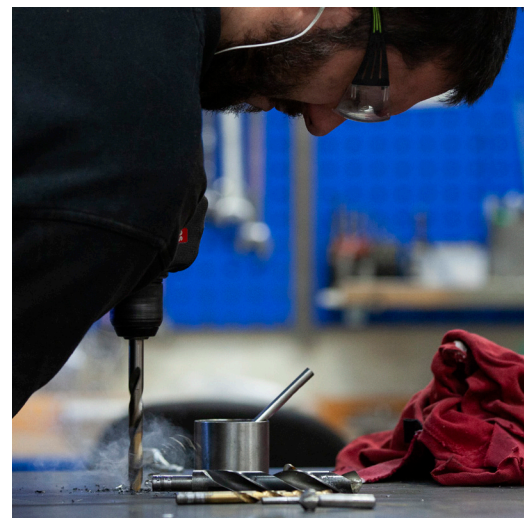
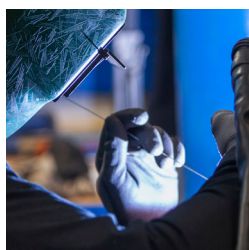
Description

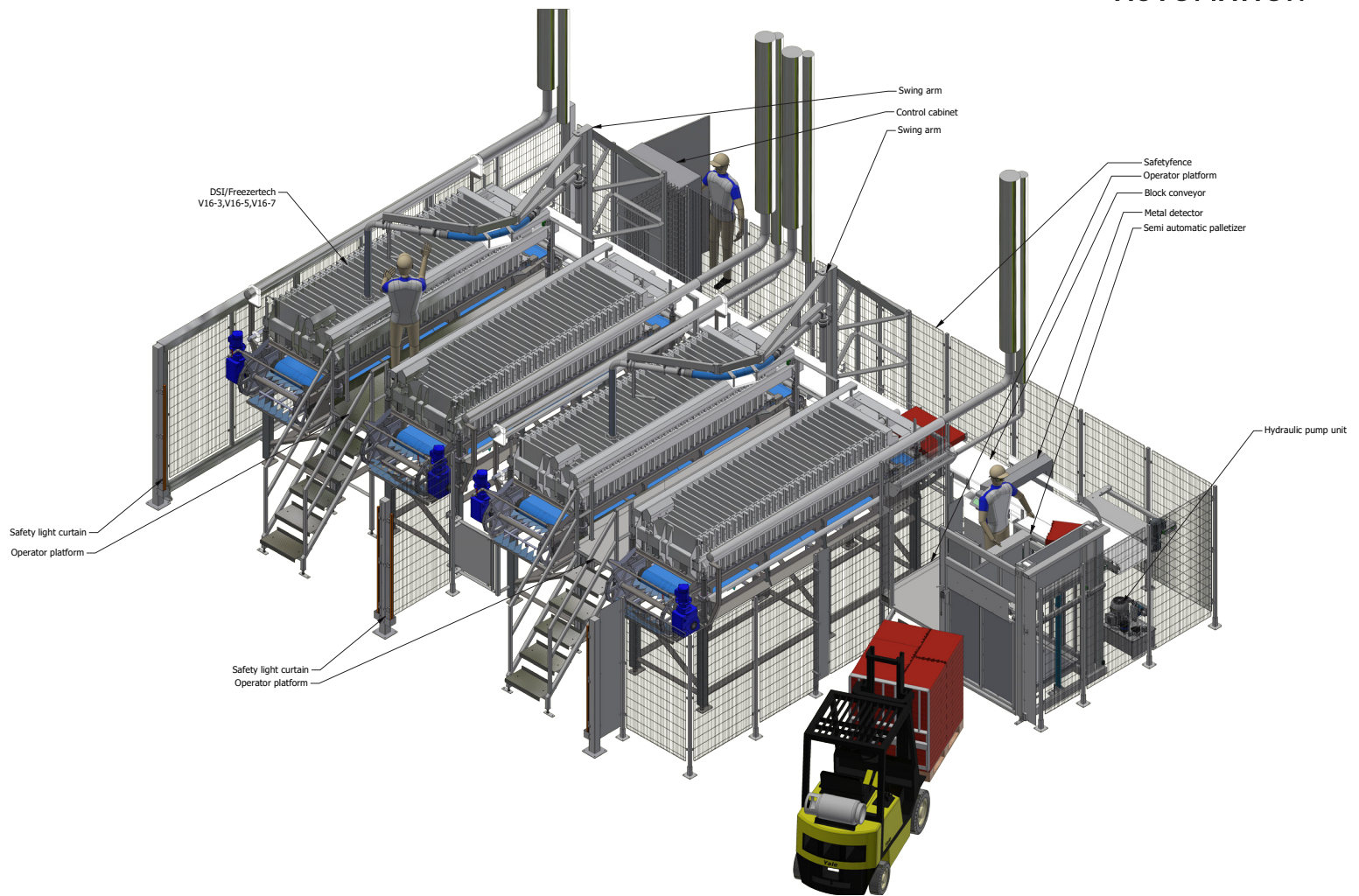
Drawing nr. 122-657843

Semi-Automatic production

V16 plate freezer solution

Cases based on 4 freezers





Semi-Automatic Production

V16 plate freezer solution

Semi-automatic production with automatic V16 bottom discharge freezers, perfect for smaller production facilities where space for an overhead unloader is limited.

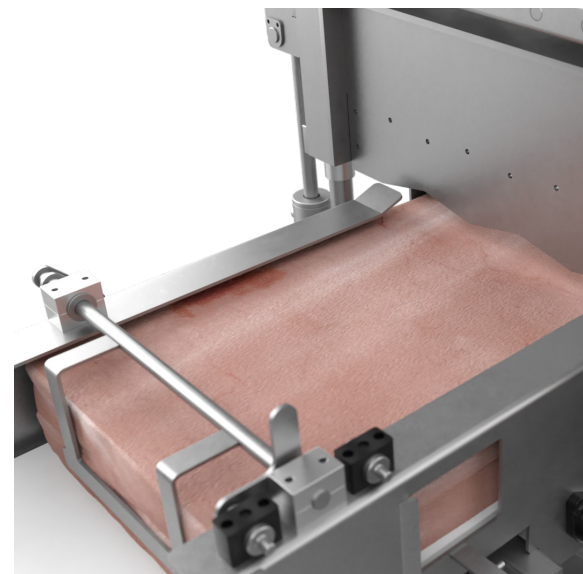
Cases based on 4 Freezers

- ▶ V16-3 32/75 Nh3 -38° C
Cycle time 180 min
Approx 37 Ton/24 hours
Block size 1070x530x75 mm
- ▶ V16-5 32/75 Nh3 -38° C
Cycle time 180 min
Approx 32,1 Ton/24 hours
Block size 600x820x75 mm
- ▶ V16-7 32/75 Nh3 -38° C
Cycle time 180 min
Approx 39,8 Ton/24 hours
Block size 1220x500x75 mm

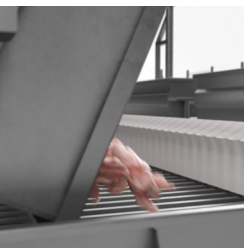
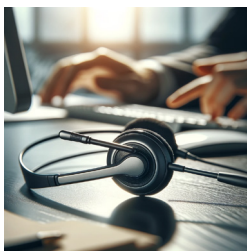
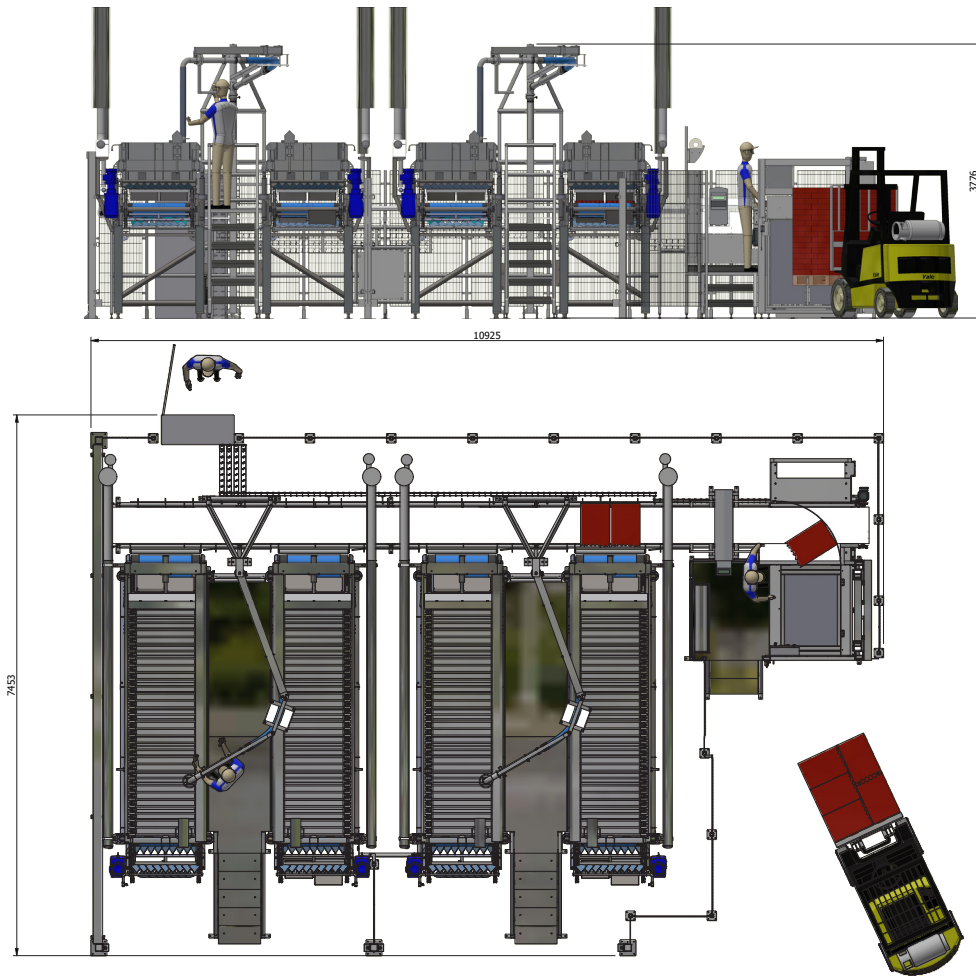
MDM

LIQUIDS / SLURRY

Drawing nr. 122-657843



Dimensions



Worldwide Service & support

Get in touch with the people behind Erlinord.
We're here to help you find the right solutions.

www.erlinord.com



Thomas Uldall Jørgensen
CEO/ Part owner
+45 20718820
tuj@erlinord.com



Lasse K. Jensen
Spare parts & service manager
+45 2262 5143
aftersales@erlinord.com

