

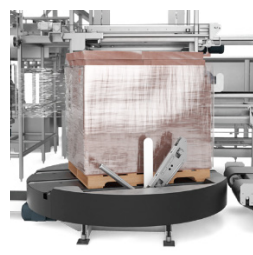
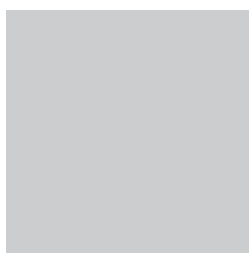
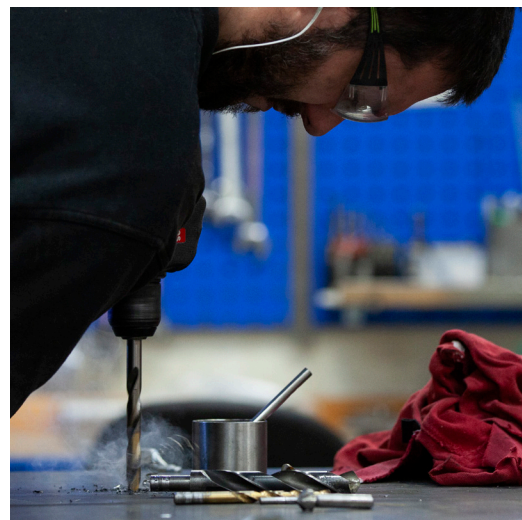
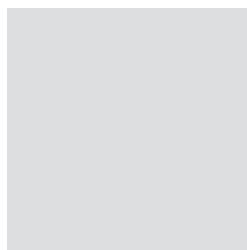
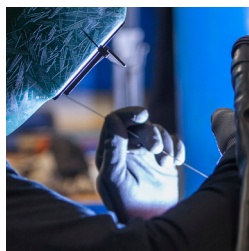
# Description

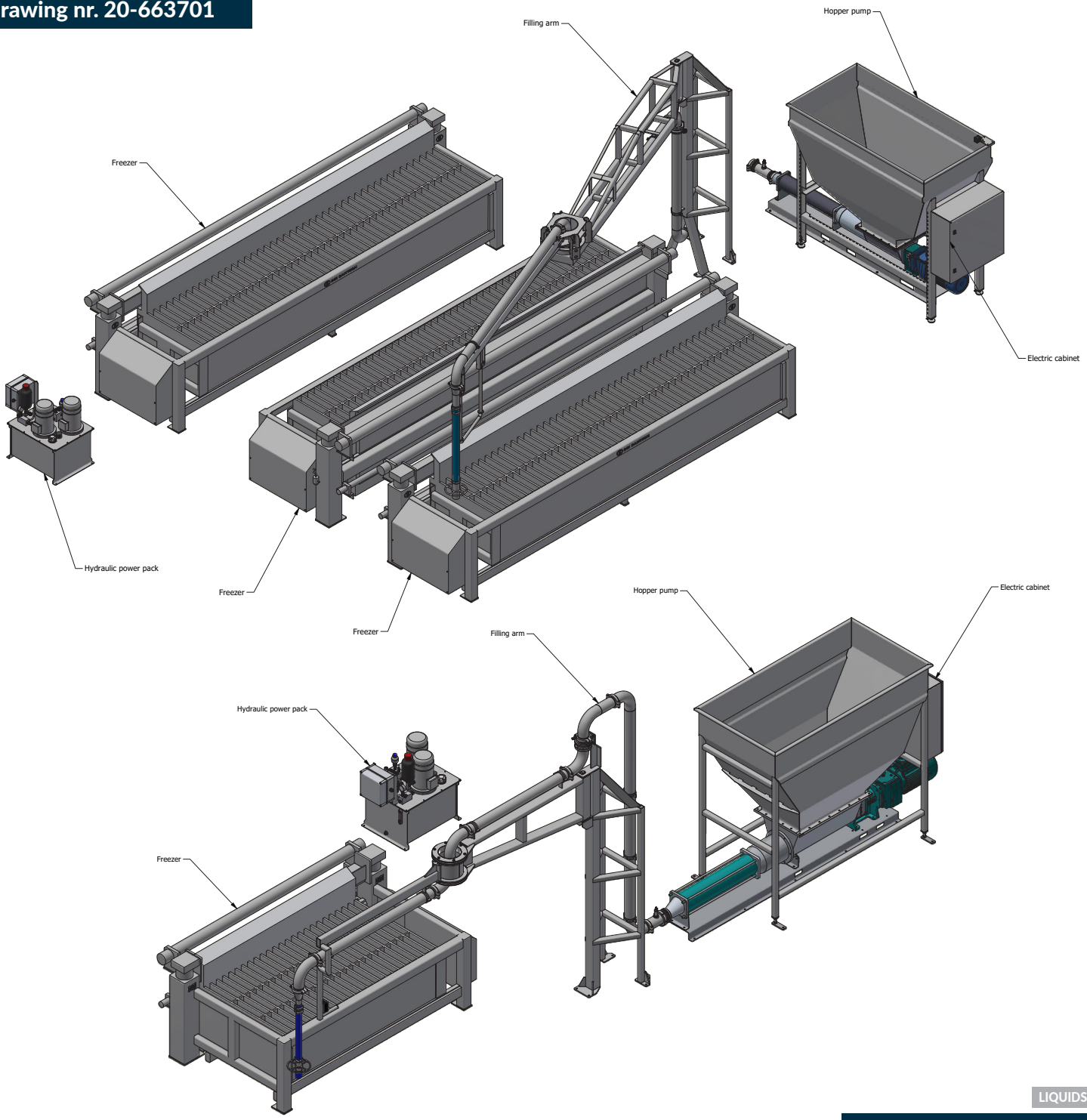
## Semi-Automatic production

Hopper pump & Filling arm

Cases based on 3 freezers and 1 freezer

Drawing nr. 20-663701/20-663596





# Automatic production

## Hopper pump & Filling arm

### Cases based on 3 Freezers

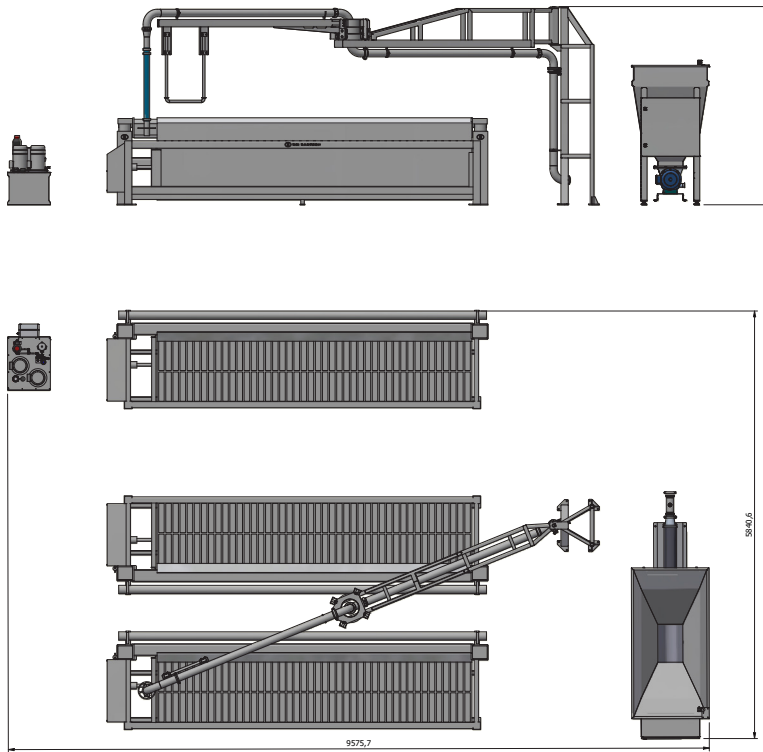
- ▶ HS Freezer Nh3 -38° C
- Cycle time 120 min
- Approx 48,5 Ton/24 Hours

### Cases based on 1 Freezers

- ▶ HS Freezer Nh3 -38° C
- Cycle time 120 min
- Approx 8,1 Ton/24 Hours

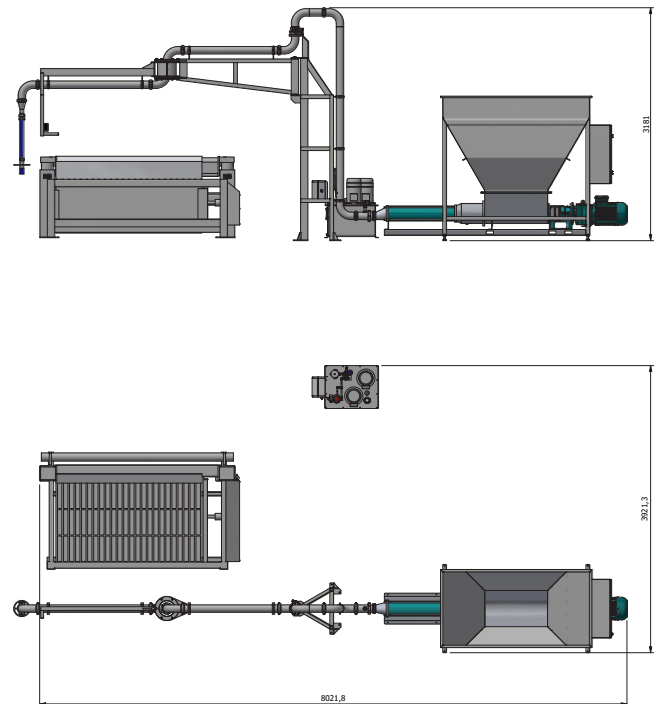
**Drawing nr. 20-663701**

Dimensions



**Drawing nr. 20-663596**

Dimensions



## Flow Description

### Hopper pump & Filling arm

The operator must fill the hopper with product before starting the pumping process. The pump will be connected to double swivel loading arm to load the freezer with product. The loading arm will be manually handled by an operator who must control and make sure that the product is evenly distributed into the slots of the freezer. When the operator has filled the freezer, the freezing cycle can begin, and the operator must reload the pump with product.

#### Loading system sydex pump

The Sydex pump will be connected to a hopper which will be able to contain enough material to load a freezer. A screw will transport the

material inside the pump and will be pumping 15 m<sup>3</sup> per hour. The pump housing is prepared for CIP cleaning. The loading system will be controlled by push buttons, where the operator can choose to start and stop the pump.

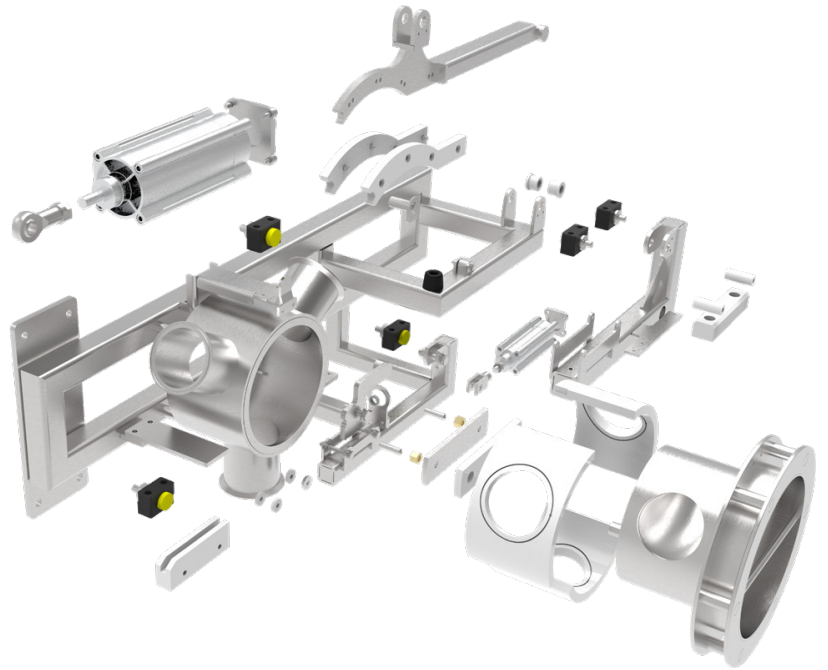
#### Pipeline system with a swing arm

The system will consist of a pipeline connecting the pump and the swing arm which can load two freezers. The maximum length is the pipeline system is 20 meters due to drop of pressure. The swing arm has two swivels for an easy and ergonomic working environment.

## Service agreements

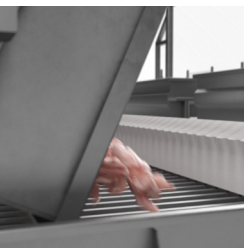
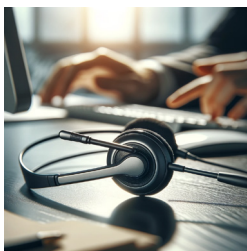
Provide you with

- Highly skilled and dedicated specialists
- Minimized downtime
- Preventative inspection
- Extended equipment lifecycle
- Maintained high safety standard
- Environmental responsibility
- Genuine spare parts
- Special price on spare parts
- Special price on labour costs



## Service & Spare parts

Even the best equipment require regular service and neglecting that can consequently prove to be costly. Our service agreements will minimize production downtime, suit your operation and budget.



## Worldwide Service & support

Get in touch with the people behind Erlinord.  
We're here to help you find the right solutions.

[www.erlinord.com](http://www.erlinord.com)



Thomas Uldall Jørgensen  
CEO/ Part owner  
+45 20718820  
[tuj@erlinord.com](mailto:tuj@erlinord.com)



Lasse K. Jensen  
Spare parts & service manager  
+45 2262 5143  
[aftersales@erlinord.com](mailto:aftersales@erlinord.com)

