

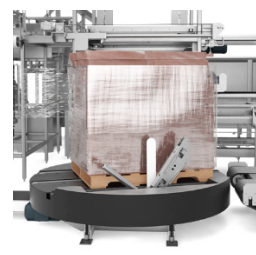
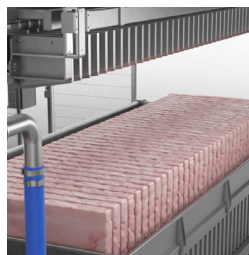
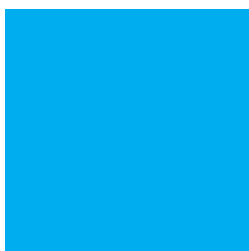
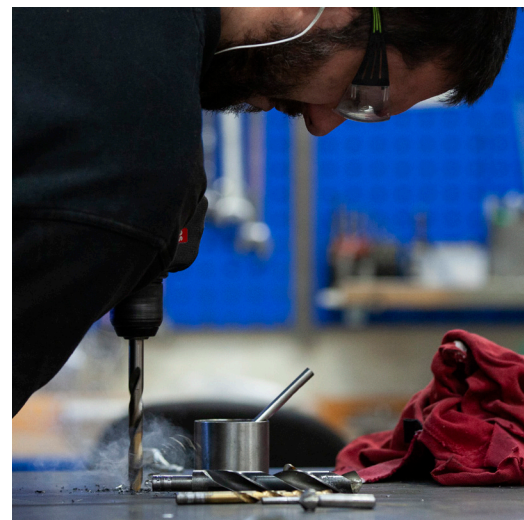
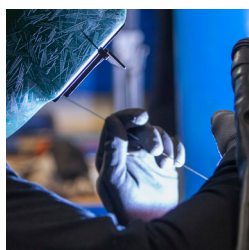
Description

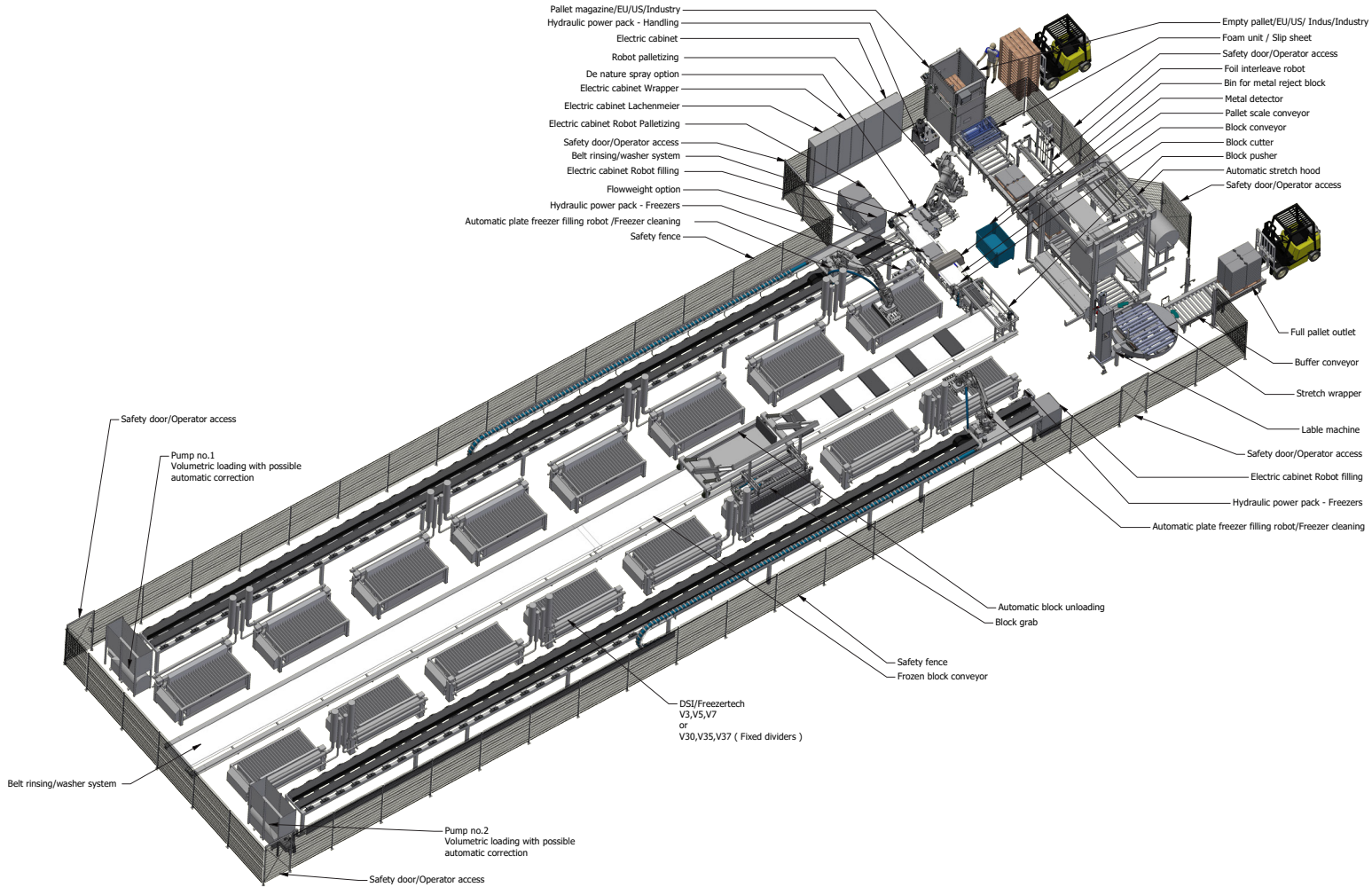
Drawing nr. 122-650448

Full-Automatic production

Pumpable products

Cases based on 16 freezers





Full automatic production

Pumpable products

Full automatic Lights-out productionline for pumpable products.
High capacity with fast discharge of complete freezer and with a robot palletizer.

Cases based on 16 Freezers

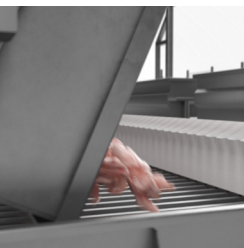
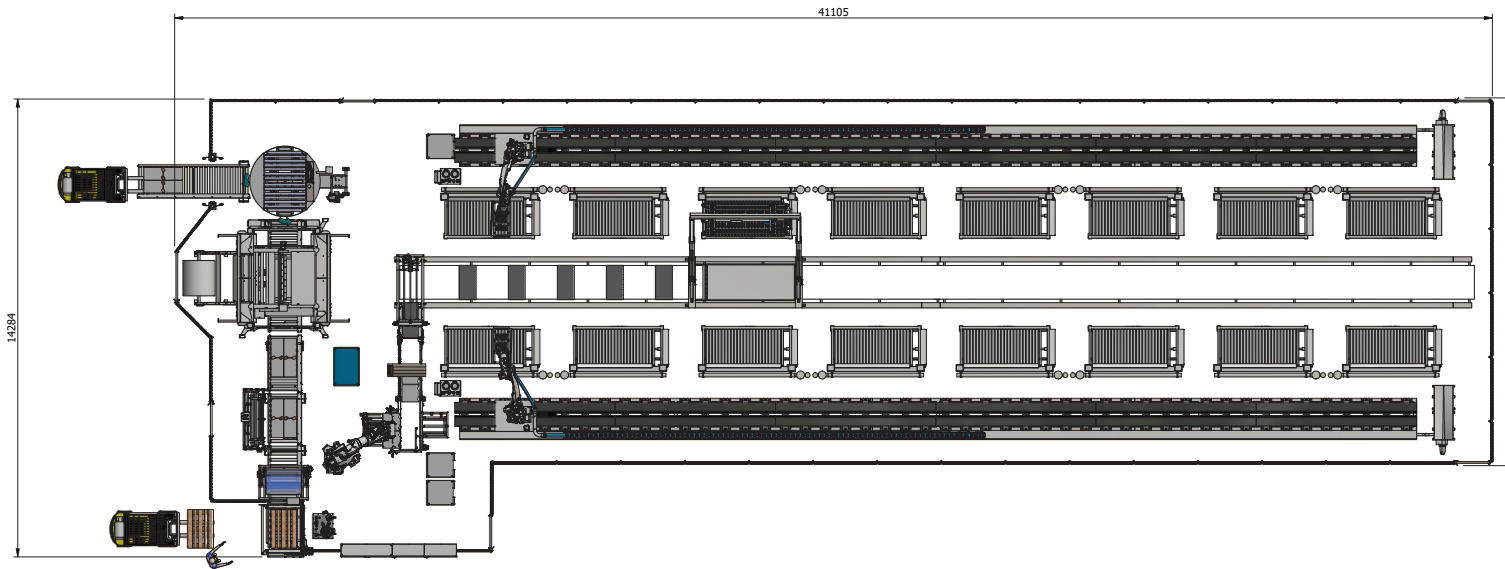
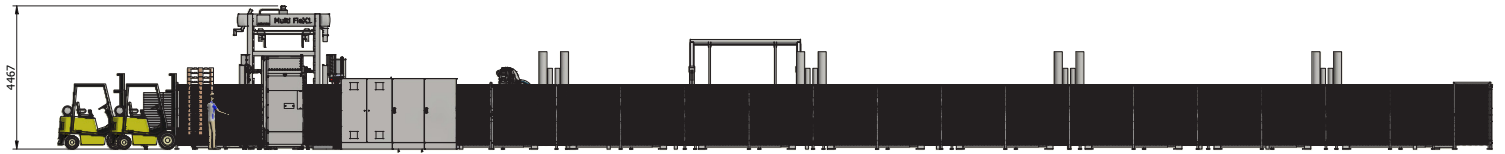
- V3 26/75 Nh3 -38° C
- Cycle time 120 min
- Approx 180 Ton/24 hours
- Block size 1070x535x75 mm
- V5 26/75 Nh3 -38° C
- Cycle time 120 min
- Approx 150 Ton/24 hours
- Block size 600x400x75 mm
- V7 26/75 Nh3 -38° C
- Cycle time 120 min
- Approx 192 Ton/24 hours
- Block size 510x500x75 mm

MDM

LIQUIDS /SLURRY

Drawing nr. 20-650448





Worldwide **Service & support**

Get in touch with the people behind Erlinord.
We're here to help you find the right solutions.

www.erlinord.com



Thomas Uldall Jørgensen
CEO/ Part owner
+45 20718820
tuj@erlinord.com



Lasse K. Jensen
Spare parts and service
+45 2262 5143
aftersales@erlinord.com

