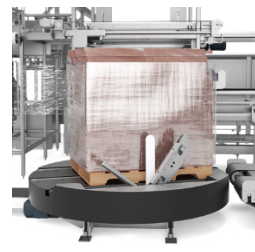
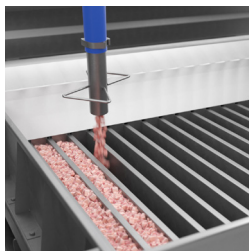
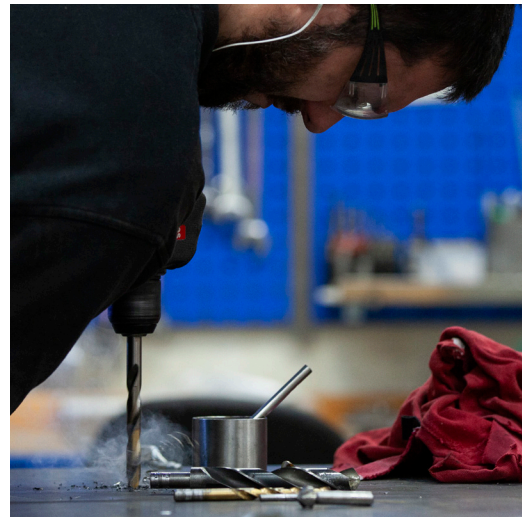
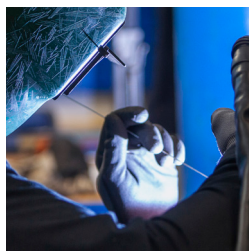


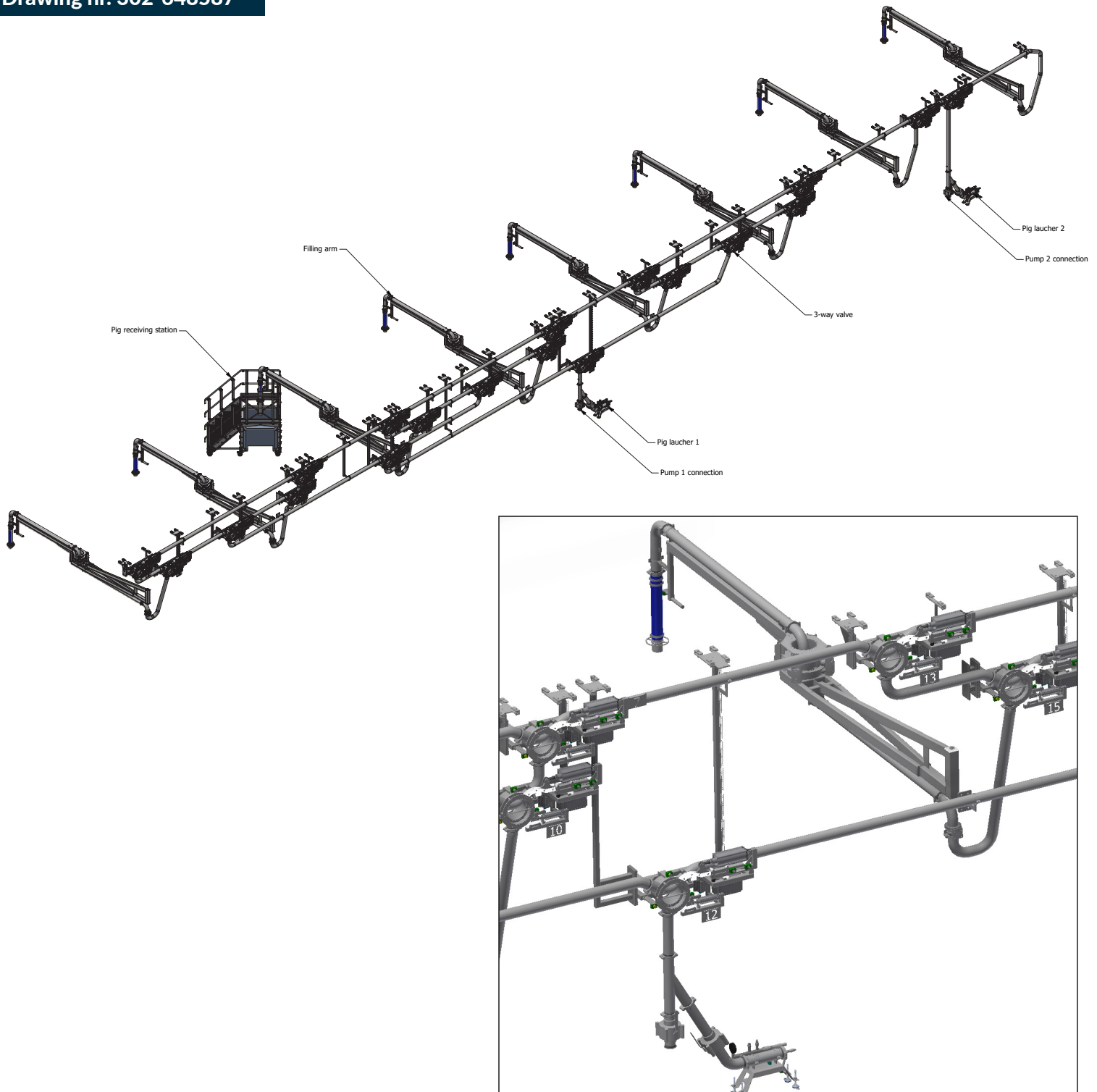
# Description

Drawing nr. 302-648587

## Flexible Pipeloading system

Filling arms with 3-way Diverter valves



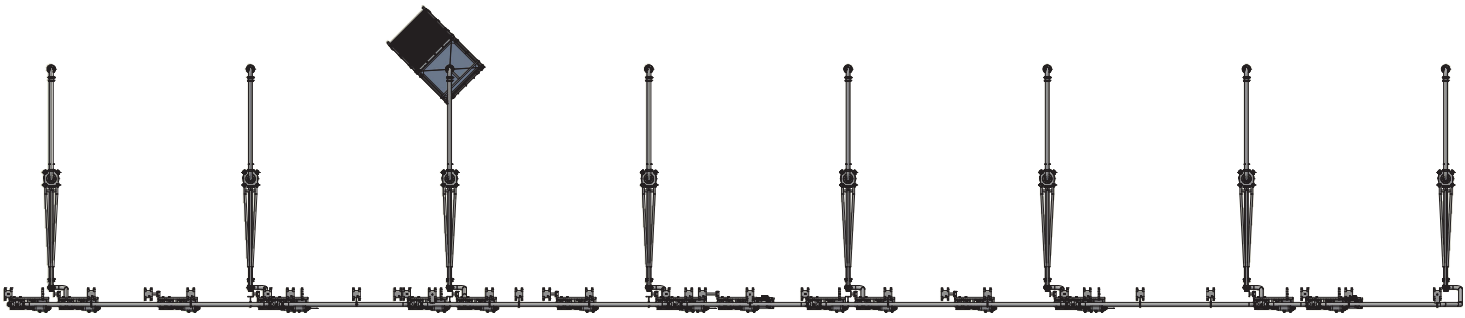
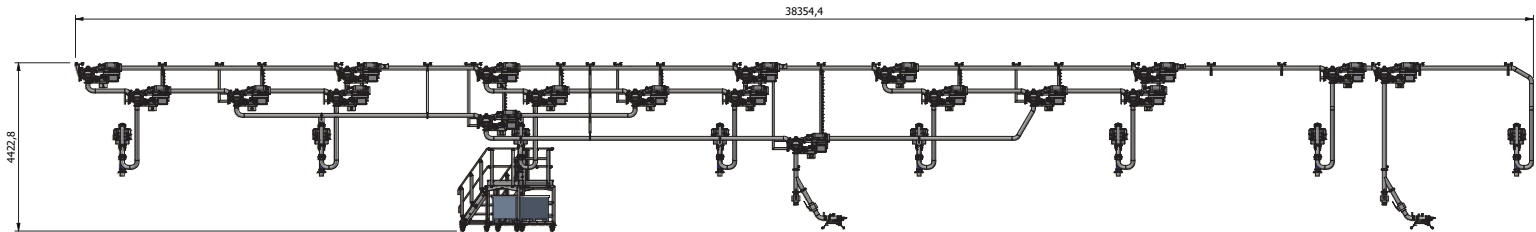


## Flexible Pipeloading system

Filling arms with 3-way Diverter valves

### Cases based on

- ▶ 3 x pump interfaces with pig cleaning
- ▶ 8 x filling arms
- ▶ Highly flexible piperothing system with multiple products at the same time, No contermination.



## Flow Description

### Filling arms with 3-way Valve setup

- ▶ The operator must select a filling arm and what pump they want to use. The 3-way valve setup will automatically adjust to the selected input and the pump starts pumping. When the freezer has been filled the pump stops. Before product change or if cleaning is necessary the pig cleaning can be used.

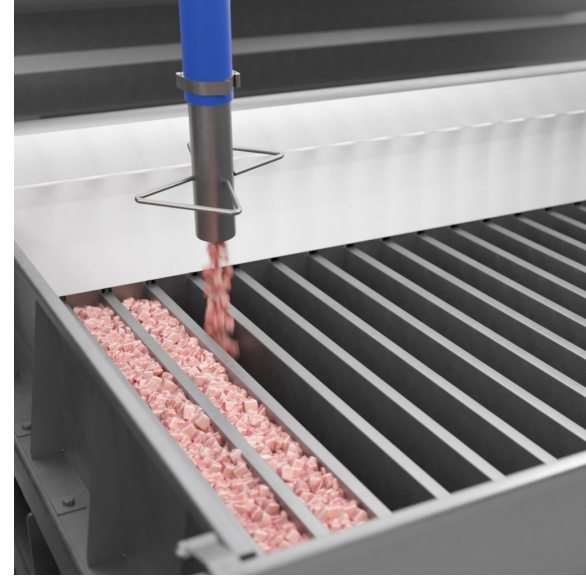
The operator connects the filling arm with the receiving station and selects which arm that needs to be cleaned. The 3-way valve setup will automatically adjust to the selected input.

Then the operator inserts the "pig" into the launcher and activate it with compressed air.

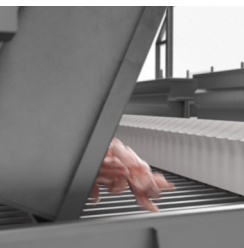
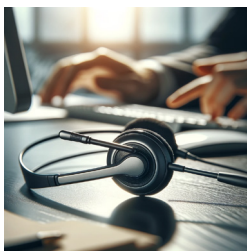
The "pig" is sent through the pipes and ends in the receiving station and the procedure can be done again with another filling arm or pump interface.

## Pipeline system with swing arms

The system will consist of a pipeline connecting the pumps and the swing arms which can load 2 freezers each. The maximum length from pump to the furthest swing arm is 20 meters due to drop of pressure. The swing arm has two swivels for an easy and ergonomic working environment.



*If you're interested in learning more, please feel free to complete our questionnaire, which is available on our website under the "Download" section. Once filled out, you can send it to [info@erlinord.com](mailto:info@erlinord.com)*



## Worldwide Service & support

Get in touch with the people behind Erlinord.  
We're here to help you find the right solutions.

[www.erlinord.com](http://www.erlinord.com)



Thomas Uldall Jørgensen  
CEO/ Part owner  
+45 20718820  
[tuj@erlinord.com](mailto:tuj@erlinord.com)



Lasse K. Jensen  
Spare parts & service manager  
+45 2262 5143  
[aftersales@erlinord.com](mailto:aftersales@erlinord.com)

